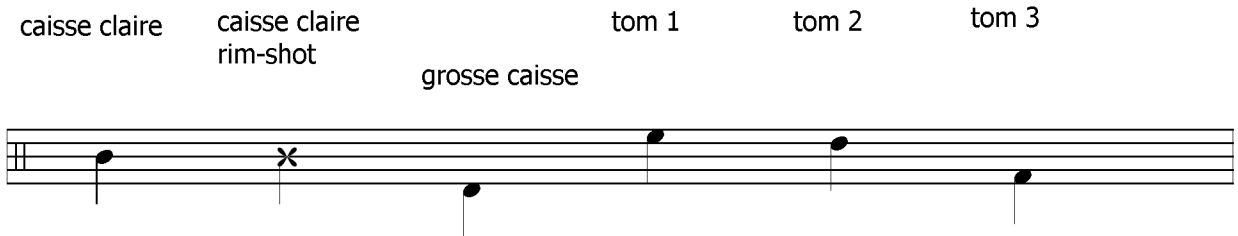
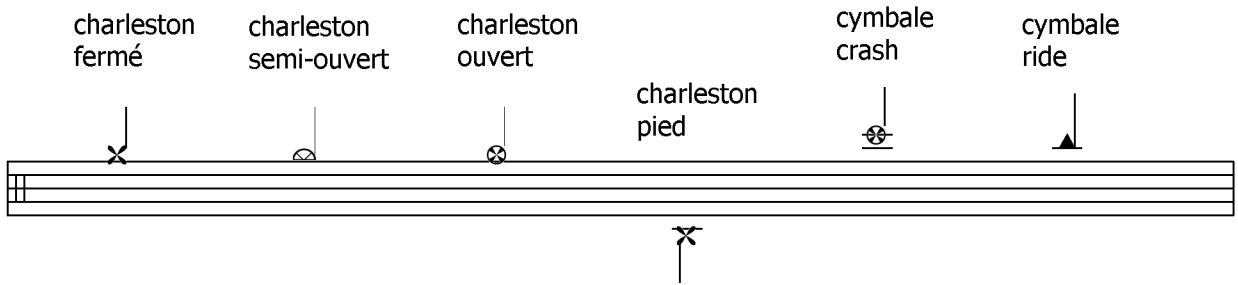


nomenclature



somewhere i belong

♩ = 82

compositeur: linkin park

The image displays a musical score for guitar and bass. It consists of seven systems of two staves each. The top staff is for guitar, and the bottom staff is for bass. The music is in 4/4 time, as indicated by the time signature at the beginning. The score includes various musical notations such as eighth notes, sixteenth notes, and rests. There are also symbols like 'x' and 'y' on the guitar staff, likely representing fretted notes or specific techniques. A circled '8' is placed above the first measure of the first system. A circled 'S' is placed above the first measure of the fifth system. The score is a transcription of the instrumental parts of the song.

First musical staff with a treble clef and a common time signature. It features a series of rhythmic patterns, including eighth and sixteenth notes, and rests. A circled cross symbol is present at the beginning.

Second musical staff, continuing the rhythmic patterns from the first staff. It includes a double bar line with a slash through it.

Third musical staff, featuring more complex rhythmic figures and a circled cross symbol at the end.

Fourth musical staff, showing a variety of rhythmic motifs and a circled cross symbol at the beginning. It ends with a double bar line and a slash through it.

Fifth musical staff, continuing the rhythmic development with various note values and rests. It ends with a double bar line and a slash through it.

Sixth musical staff, featuring rhythmic patterns with circled cross symbols above the notes. It ends with a double bar line and a slash through it.

Seventh musical staff, concluding the piece with rhythmic patterns and a circled cross symbol at the beginning.

